

## Luminex™ 1040E\_G6 \_ EDGE-LIT FLAT LED 1X4 PANEL



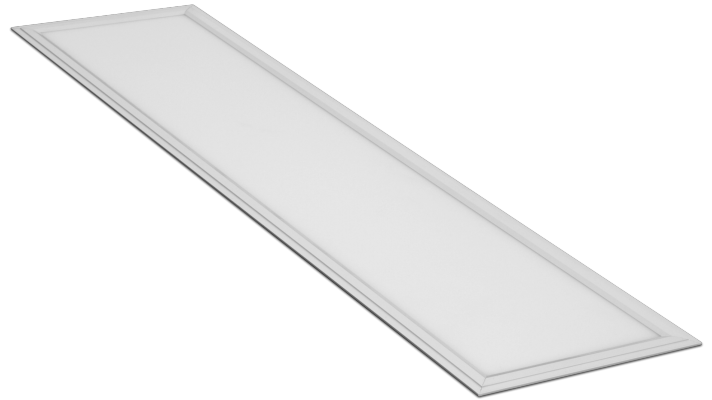
A high performance LED flat panel designed to lay in to drop ceilings; typically used to replace 1'x4' and 2'x 4' fluorescent fixtures. Suitable for office, school, hospital and medical facility applications. Panels are fully dimmable, and are compatible with building controls, motion sensors, timers, and daylight harvesting systems.

The design of the panels produces an even, consistent shadowless light. The LEDs mean long life, high lumen maintenance, high CRI, and low maintenance, with no hazardous materials.

PROJECT NAME	
CATALOG NUMBER	
LOCATION	
NOTE	

### FEATURES:

- Lumens: 3,500K: 4,050 lm ↑ / 5,000K: 4,365 lm ↑
- 45 Watts
- CCT : 3,500K, 4,000K, 5,000K
- 50,000 Hour Life (L70)
- 12 lbs
- 0-10V dimming
- 5 Year Warranty
- CRI: CRI 85 (Typ.)
- Optional remote power supply as required
- Surface mount and suspension kits available
- Energy Harvesting Wireless Control
- LM79 Test data available
- 0~10V dimming



### CONTROL:

- Standard discrete driver on back
- Energy Harvesting Wireless Control Technology

### CONSTRUCTION:

- The housing and back panel are aluminum providing heat sink and thermal control capabilities
- Lens is translucent white polycarbonate
- Profile including the control box is 2 inches
- Unique mounting gives flush-fit in drop ceiling
- Modular construction for easy replacement

### Luminaire Ordering Information:

Typical Order Example - L1040E4535H\_RPA

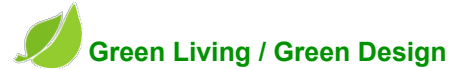
	Dimension	Optic	Wattage	Color	CRI	Finish	Option	Dimming
L = Luminex	1040 = 1'x4'	E = Edge-Lit	45 = 45 Watt	35 = 3500 40 = 4000 50 = 5000	H= >85	Blank = Off White Standard	RP = Remote PSU EM = Philips BSL 17C	A=0~10v

### Optional Accessories:

Item	Model Number	Description	Option's Suffix	Item	Description
Luminex™	L-PCSK	Aircraft cable suspension kit	RP	Remote PSU	15FT standard Metal Conduit flexible cable
	L-1040ESMK	Surface Mounting Kit 1x4 Edge-Lit			



## Luminex™ 1040E\_G6\_ EDGE-LIT FLAT LED 1X4 PANEL



▪ **SPECIFICATION:**

Specification	Description	
Lamp Type	Side Edge	
Color Temperature (CCT: K)	3,500K	5,000K
Luminous Flux (lm)	4,050lm	4,365lm
Efficiency (lm/w)	90 lm/w	97 lm/w
Color Consistency	Proprietary binning for uniform color	
Lumen Maintenance (L70)	50,000 hours	
Power Factor	0.9 ↑	
Input Voltage	120-277VAC, 50/60 Hz	
Power Consumption	45 Watt	
Dimming Range	0~10V Dimming	
CRI (Ra.)	82 (Typ.)	
Dimension	11.7" x 47.7" x 5/8"	
Weight	11.8 lbs	
Optics	Light Refraction / Acrylic Diffusion	
Beam Angle	120°	
Application	Fits standard grid for drop ceilings	
Operating Temperature	-4F ~122F	
Humidity	20% - 85% RH, Non condensing	
Certification	UL / DLC	
Material Usage	RoHS compliant, No mercury	
Environment	Dry location, Indoor Use	
LED Class	L70 rated to 50,000 hours	



▪ **DIMENSION: (Unit: mm)**

